

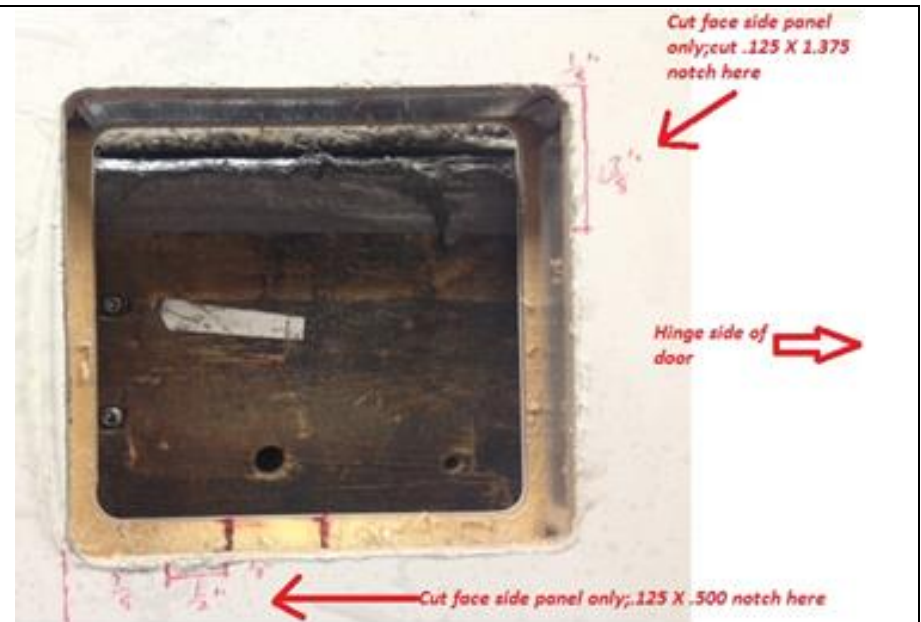
# Challenger Door

LK081 RH door core retrofit to LK355

Date: 4/15/20

BY: AWY

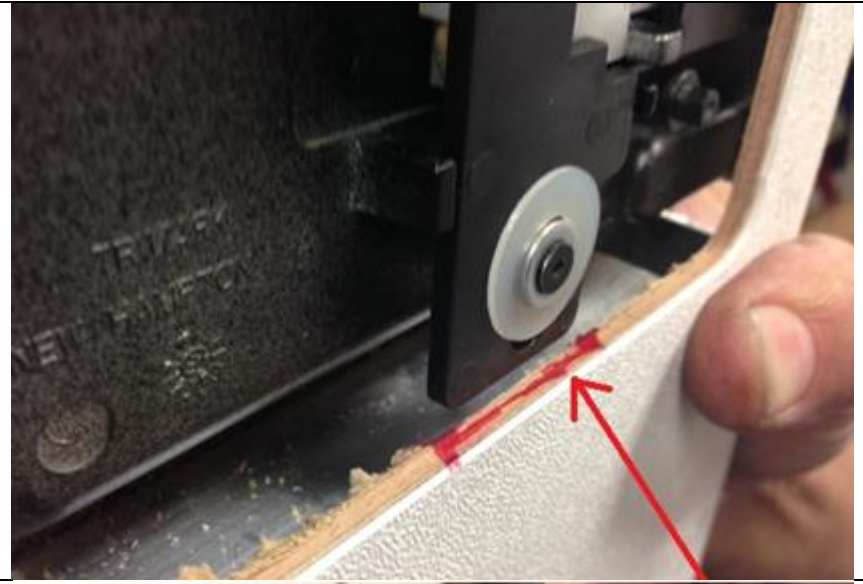
Cut a .125" wide x 1.375" tall notch thru face side panel starting at top corner of original rout-out, as shown in. Cut .125" tall x .500" wide notch thru face side panel starting at .625" from left side of original rout-out.



Sand LUAN ONLY approximately .063" deep on back panel. DO NOT sand backside plastic. The latch back may not cover the enlarged plastic cut-out if any plastic is sanded. Sand 1.125" wide and down to tube frame, starting at 1.375" from left side of original rout-out.



This sanding is to allow latch to function properly.



Be sure plunger is pushed in all the way or you may not be able to install the latch into rout-out.

